

# CLASSROOM *Secrets*

## #LIFEworkbalance

We have started a #LIFEworkbalance campaign and we need your help to complete our LIFE/work balance survey.

We hope to publish the results soon, so please give 15 minutes of your time to help us get a true picture of school life.

Want to be a part of this campaign? Take the [survey](#) on our website and share it with your colleagues!

## Year 1 – Summer Block 6 – Time – Time to the Half Hour

### About This Resource:

This PowerPoint has been designed to support your teaching of this small step. It includes a starter activity and an example of each question from the Varied Fluency and Reasoning and Problem Solving resources also provided in this pack. You can choose to work through all examples provided or a selection of them depending on the needs of your class.

### National Curriculum Objectives:

Mathematics Year 1: (1M4a) [Tell the time to the hour and half past the hour and draw the hands on a clock face to show these times](#)

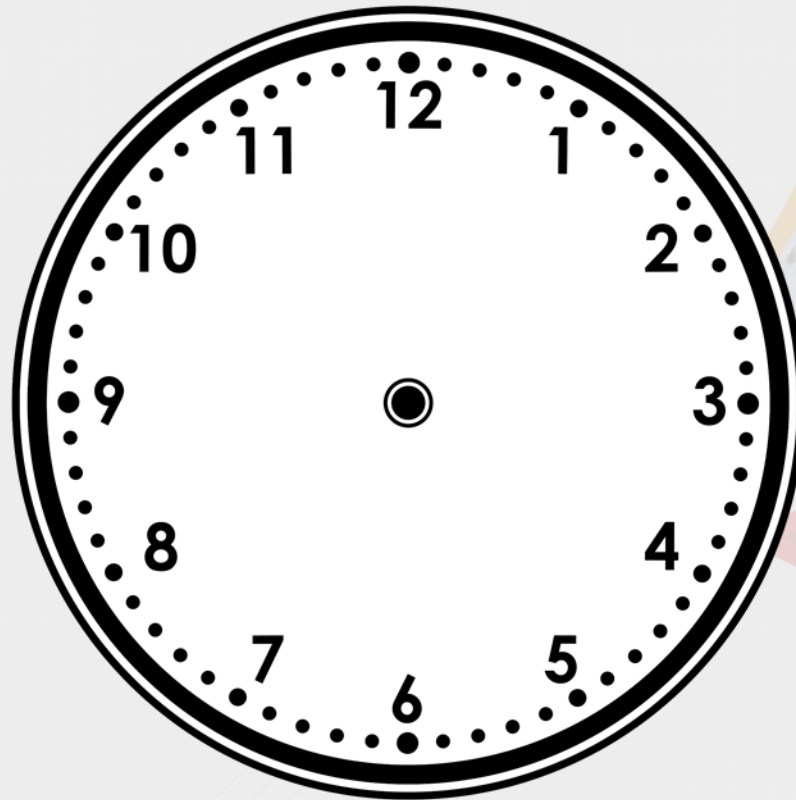
More [Year 1 Time](#) resources.

Did you like this resource? Don't forget to [review](#) it on our website.

# Step 4: Time to the Half Hour

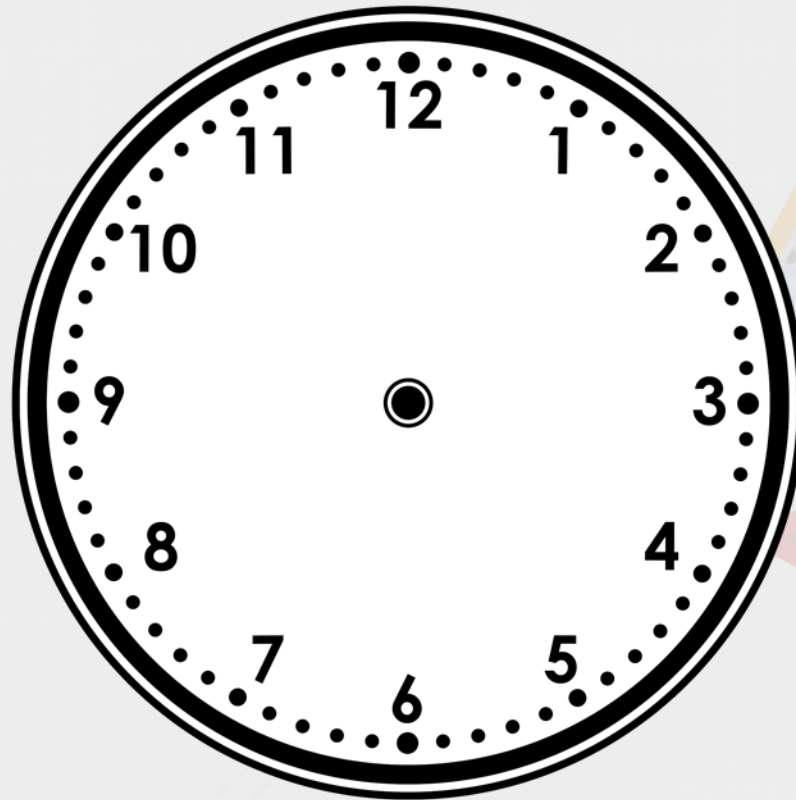
## Introduction

The hour hand is missing from the clock face.  
What time could it be?



## Introduction

The hour hand is missing from the clock face.  
What time could it be?



**It could be half past any hour.**

Varied Fluency 1

What time does the clock show?



Half past 9

Half past ten

Half past 6

Varied Fluency 1

What time does the clock show?



Half past 9

**Half past ten**

Half past 6

## Varied Fluency 2

True or false? The clock shows half past five.

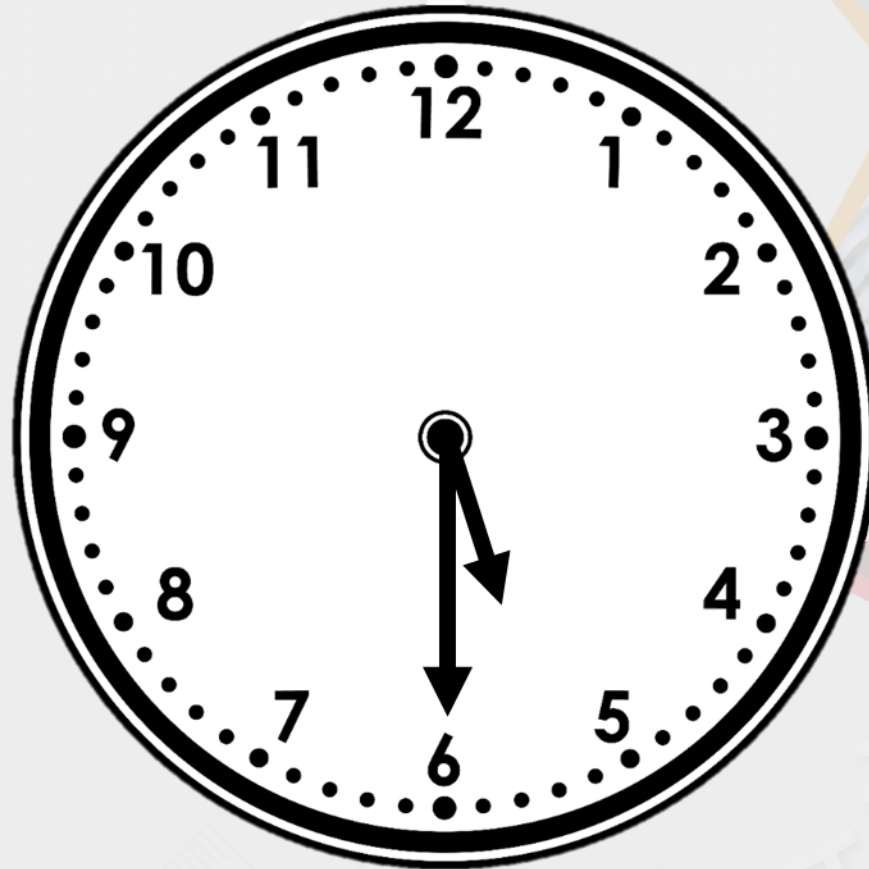




Varied Fluency 2

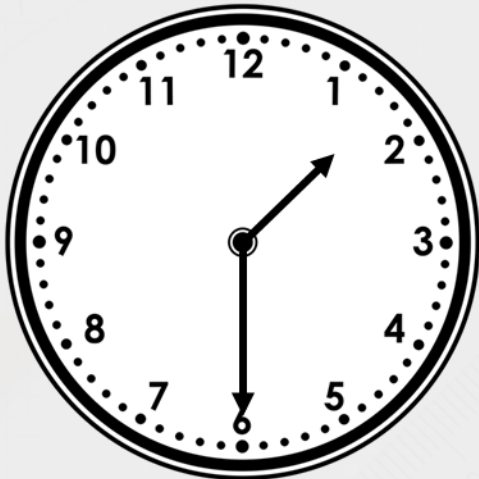
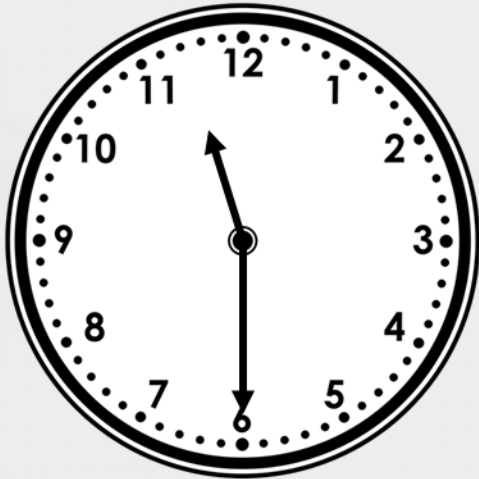
True or false? The clock shows half past five.

**True**



Varied Fluency 3

Draw a line to match the clocks to the correct written time.



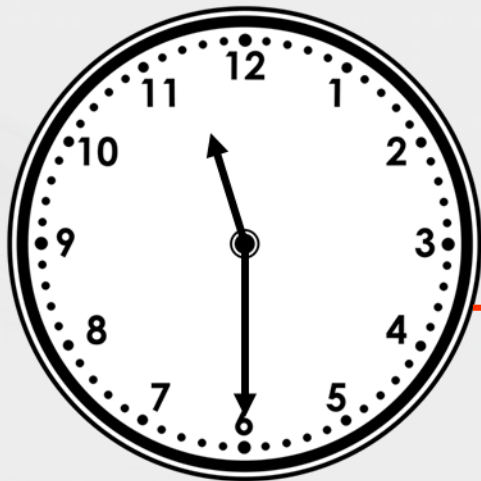
Half past 11

Half past one

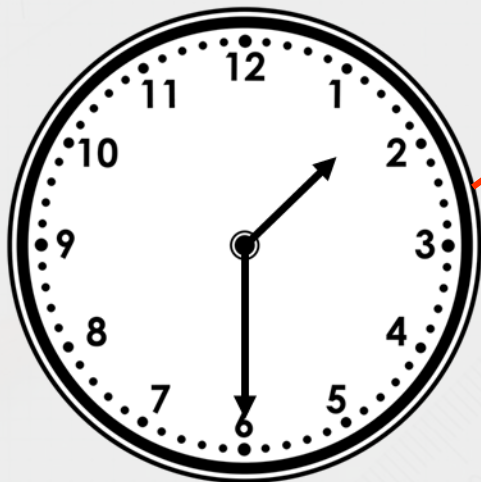
Half past ten

### Varied Fluency 3

Draw a line to match the clocks to the correct written time.



Half past 11

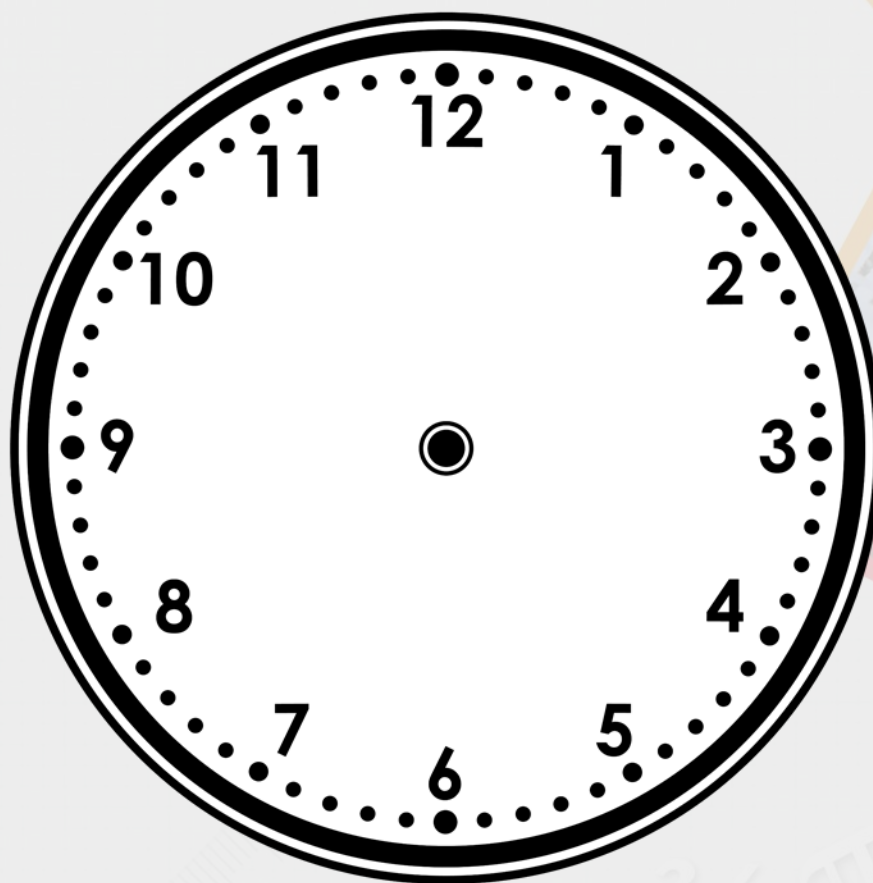


Half past one

Half past ten

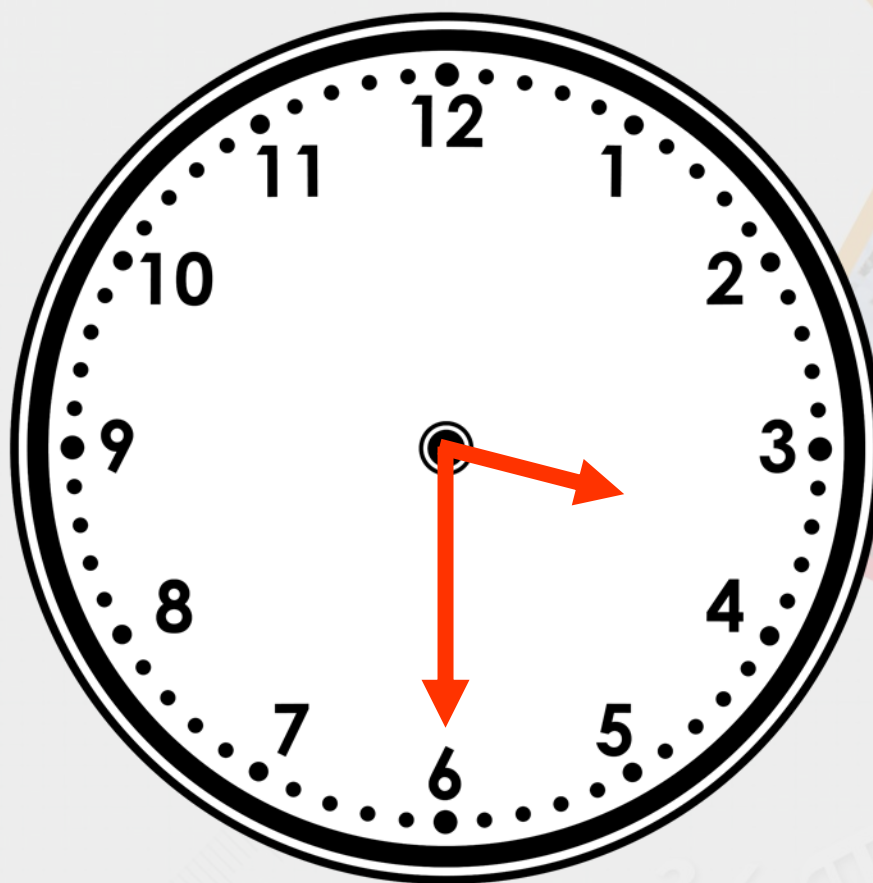
## Varied Fluency 2

**Draw the hour hand and the minute hand on to the clock face to show the time half past 3.**



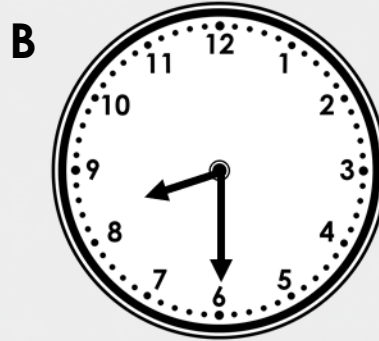
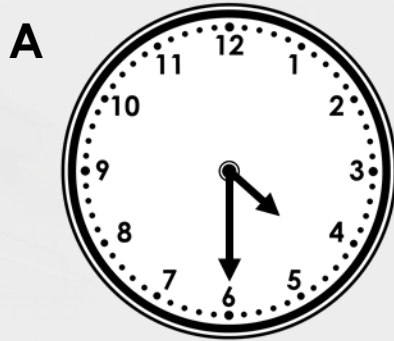
## Varied Fluency 2

Draw the hour hand and the minute hand on to the clock face to show the time half past 3.



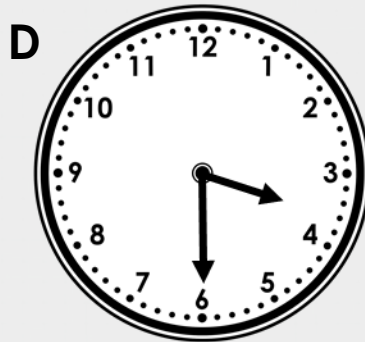
## Reasoning 1

Which is the odd one out? Explain your answer.



**C**

Half past 3



**E**

Half past 8

## Reasoning 1

Which is the odd one out? Explain your answer.

**A**



**B**



**C**

Half past 3

**D**



**E**

Half past 8

**A is the odd one out because...**

## Reasoning 1

Which is the odd one out? Explain your answer.

**A**



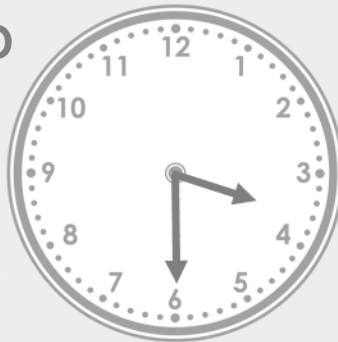
**B**



**C**

Half past 3

**D**



**E**

Half past 8

**A is the odd one out because it is the only clock which shows half past 4. B and E show half past 8 and C and D show half past 3.**



## Reasoning 2

Samuel and Ellan are discussing the time.



**Samuel**

It is half past three.



No, it is half past four.

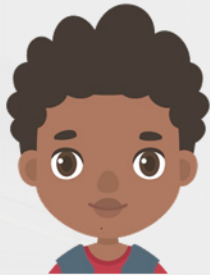


**Ellan**

Who is correct? Explain your answer.

## Reasoning 2

Samuel and Ellan are discussing the time.



**Samuel**

It is half past three.



No, it is half past four.



**Ellan**

Samuel is correct because...

## Reasoning 2

Samuel and Ellan are discussing the time.



**Samuel**

It is half past three.



No, it is half past four.

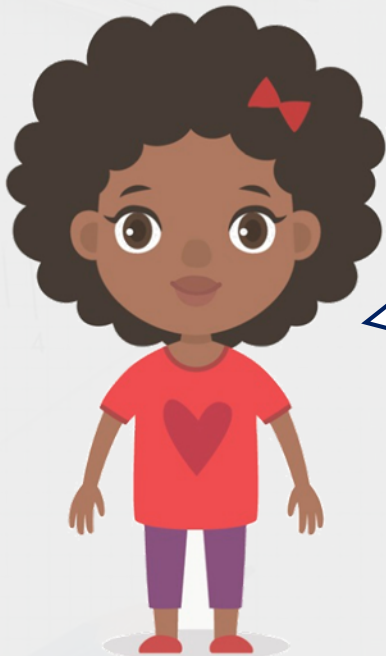


**Ellan**

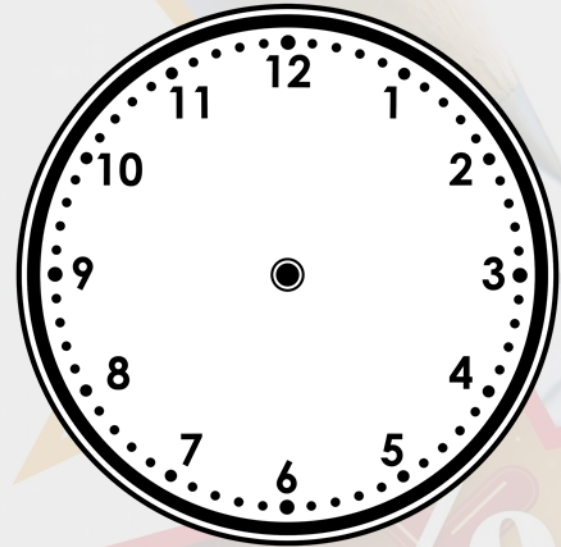
**Samuel is correct because the hour hand is pointing in between the 3 and the 4 so the time shown is half past three.**

## Problem Solving 1

**Nicola is describing the time. Use the clues to work out what time Nicola is thinking of.**

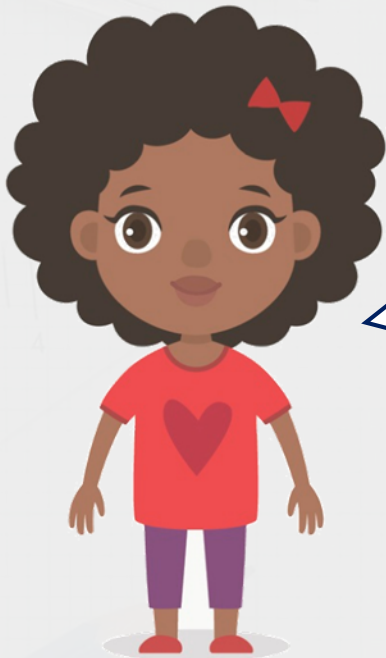


**The minute hand is pointing to the 6. The hour hand is pointing in between the 11 and the 12.**



## Problem Solving 1

Nicola is describing the time. Use the clues to work out what time Nicola is thinking of.



The minute hand is pointing to the 6. The hour hand is pointing in between the 11 and the 12.



**The time Nicola is thinking of is half past 11.**