



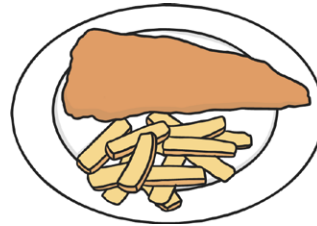
# Question Mark or Full Stop?

I can spot sentences that need a question mark.



1. Put a question mark or a full stop in the box to finish off the sentence correctly.

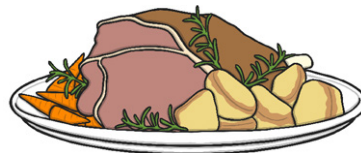
a) Do you like fish



b) Can I play with you



c) Mum is cooking dinner



d) Is it raining



e) I like my hat





# Question Mark or Full Stop?

I can spot sentences that need a question mark.



1. Put a question mark or a full stop in the box to finish off the sentence correctly.

a) Would you like a slice of cake



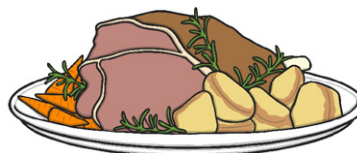
b) Can I play with you



c) What is Farhan doing



d) Mum is cooking dinner



e) Is it raining

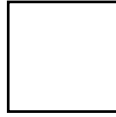


f) I like my hat

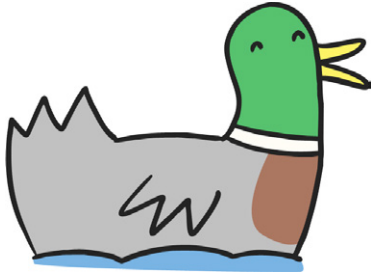




g) This flower smells nice



2. Now write your own question to go with this picture.



---

---

---

---



1. Cut out and stick the question marks or full stops onto the right sentences.

- a) Do you like fish ?
- b) Can I play with you ?
- c) Mum is cooking dinner .
- d) Is it raining outside ?
- e) Where is my hat ?



2. Cut out and stick the question marks or full stops onto the right sentences.

- a) Would you like a slice of cake ?
- b) Can I play with you ?
- c) Mum is cooking dinner .
- d) What is Farhan doing ?
- e) Is it raining outside ?
- f) Where is my hat ?
- g) This flower smells nice .