

# The Titanic

The Titanic was a very big ship. It carried over 2,000 people. Its first journey was from Southampton to New York but the ship never got to the USA.



## What Could You Do on the Titanic?

There were lots of things to do on the Titanic if you were rich!

**eat in a restaurant**

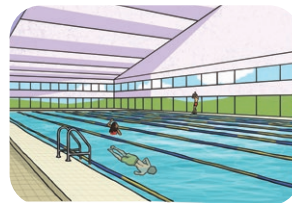


**swim in a pool**



**read in a library**

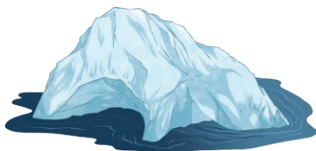
**go to a gym**



## What Happened to the Titanic?

Sadly, the Titanic hit an iceberg and sank. Many people died.

### Did You Know...?



1. The Titanic was 269 metres long (the same length as three football pitches or 24 buses).
2. The iceberg that hit the Titanic was 30 metres tall.

# Questions

1. How many people did the Titanic carry? Tick one.

- over 1,000
- over 2,000
- over 3,000

2. Where was the Titanic going to? Tick one.

- New York
- Southampton
- Belfast

3. Tick one word to complete the sentence.

There were lots of things to do on the Titanic if you were \_\_\_\_\_.

- poor
- sad
- rich

4. What did the Titanic hit? Tick one.

- an iceberg
- a hill
- a wave

5. Which of these was not on the Titanic? Tick one.

- a pool
- a cinema
- a gym

# Answers

1. How many people did the Titanic carry? Tick one.

- over 1,000
- over 2,000**
- over 3,000

2. Where was the Titanic going to? Tick one.

- New York**
- Southampton
- Belfast

3. Tick one word to complete the sentence.

There were lots of things to do on the Titanic if you were \_\_\_\_\_.

- poor
- sad
- rich**

4. What did the Titanic hit? Tick one.

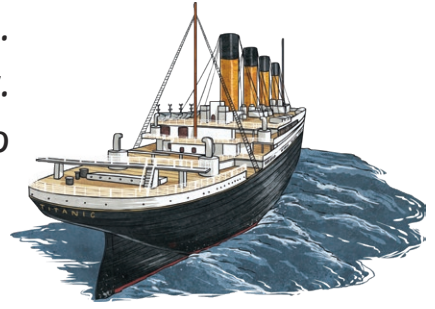
- an iceberg**
- a hill
- a wave

5. Which of these was not on the Titanic? Tick one.

- a pool
- a cinema**
- a gym

# The Titanic

The Titanic was the biggest ship of its time. It carried over 2,000 passengers and crew. Its first journey was from Southampton to New York but the ship never got to the USA.



## How Was the Titanic Made?

The Titanic was built in Belfast. It took three years to build and cost millions of dollars.

The Titanic had four funnels. Only three of these funnels worked. The other was to make the ship look more important.

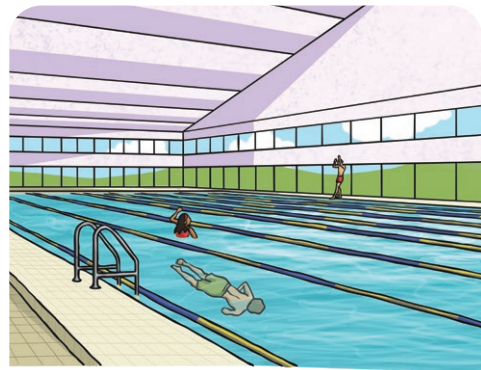


## What Could You Do on the Titanic?

There were lots of things to do on the Titanic! If you were a rich passenger, you had a private bathroom, sitting room and bedroom. You could go to restaurants or swim in the pool. If you were a poor passenger, you slept on bunk beds in crowded cabins. There were less fun things that you could do.

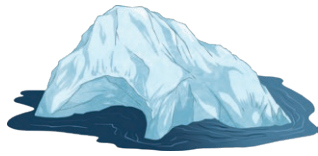
On the Titanic, there were:

- four restaurants;
- one pool;
- two libraries;
- one gym.



## Why Didn't the Titanic Reach the USA?

Sadly, on 15<sup>th</sup> April 1912, the Titanic hit an iceberg and sank. Many people lost their lives.



### Did You Know...?

1. The Titanic was 269 metres long (the same length as three football pitches).
2. The iceberg that hit the Titanic was around 30 metres tall.



# Questions

1. How many people did the Titanic carry? Tick one.

- over 1,000
- over 2,000
- over 3,000

2. Number the events from 1-3 to show the order that they occur in the text.

Poor passengers ...

were travelling to  
New York.

Rich passengers ...

had less fun  
things to do.

All of the passengers ...

had lots of fun  
things to do.

3. Number the events below to show the order they happened.

- The Titanic left Southampton on its first journey.
- The Titanic hit an iceberg.
- The Titanic was built in Belfast.

4. Fill in the missing word.

The Titanic was the \_\_\_\_\_ ship of its time.

5. Find and copy one word that shows the Titanic sinking was an unhappy event.

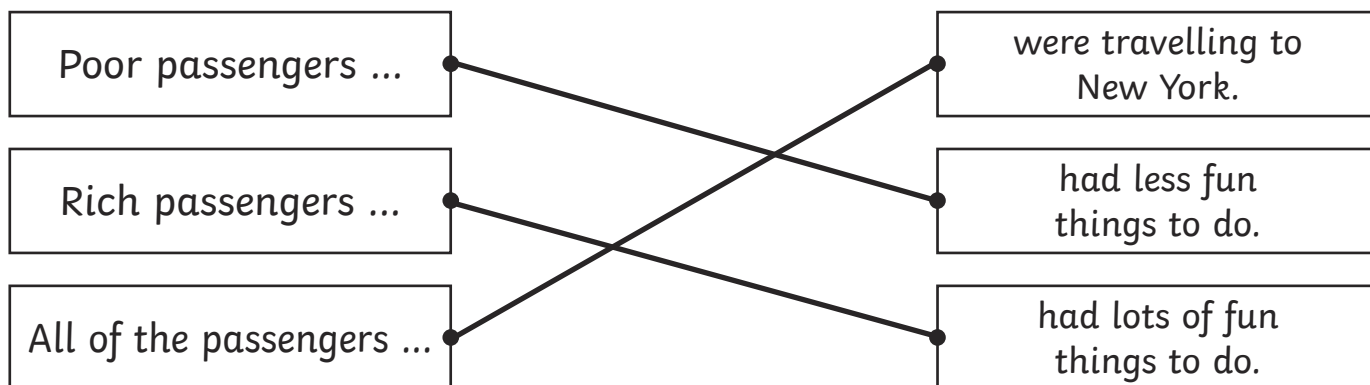
---

# Answers

1. How many people did the Titanic carry? Tick one.

- over 1,000  
 **over 2,000**  
 over 3,000

2. Number the events from 1-3 to show the order that they occur in the text.



3. Number the events below to show the order they happened.

- 2 The Titanic left Southampton on its first journey.  
 3 The Titanic hit an iceberg.  
 1 The Titanic was built in Belfast.

4. Fill in the missing word.

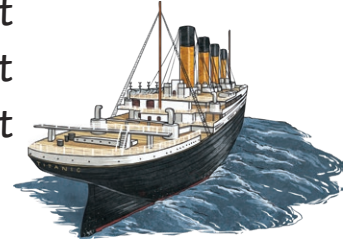
The Titanic was the **biggest** ship of its time.

5. Find and copy one word that shows the Titanic sinking was an unhappy event.

**sadly**

# The Titanic

The Titanic was the biggest ship of its time. It carried over 2,000 passengers and crew. Its first journey was from Southampton to New York but the ship never got to the USA.



## How Was the Titanic Made?

The Titanic was built in Belfast. It took three years to build and cost millions of dollars.

The Titanic had four funnels. Only three of these funnels worked, the other was to make the ship look more powerful and important.

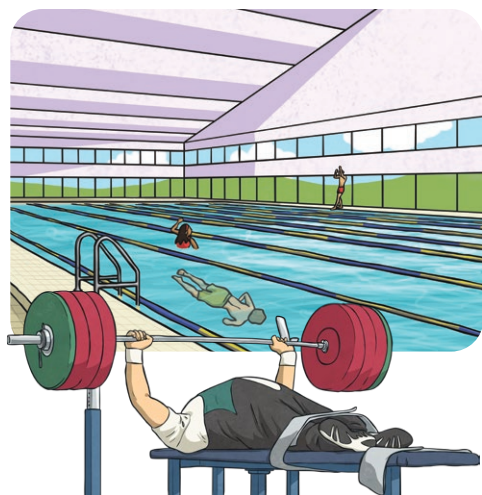
## What Could You Do on the Titanic?

There were lots of things to do on the Titanic! If you were a rich passenger, you travelled in first class. First class passengers had a private bathroom, sitting room and bedroom. You could go to restaurants, enjoy music and dancing or swim in the pool.

If you were a poor passenger, you travelled in third class. Third class passengers slept on bunk beds in crowded cabins. There were only two bathrooms for all of the third class passengers on board! There were less fun things to do.

### On the Titanic, there were:

- four restaurants;
- one pool;
- two barber shops;
- two libraries,
- one gym;
- one squash court;
- lifts to move between floors.

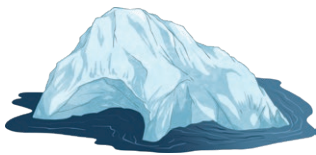




## Why Didn't the Titanic Reach the USA?

Sadly, on 15<sup>th</sup> April 1912, the Titanic hit an iceberg and sank. Many people lost their lives.

There are lots of different ideas about who was to blame. Some people say the ship's captain ignored warnings about icebergs. If he had slowed down, the disaster might never have happened. Other people say the screws that were holding the ship together were made from poor quality iron so the ship broke easily when the iceberg hit.



### Did You Know...?

1. The Titanic was 882 feet (269 metres) long.
2. The iceberg that hit the Titanic was around 100 feet (30 metres) tall.



# Questions

1. How many people did the Titanic carry? Tick one.

- over 1,000  
 over 2,000  
 over 3,000

2. Number the events from 1-3 to show the order that they happened in.

- The Titanic left Southampton on its first journey.  
 The Titanic hit an iceberg.  
 The Titanic was built in Belfast.

3. Fill in the missing word.

There were lots of things to do on the Titanic if you were \_\_\_\_\_.

4. How many bathrooms did the third class passengers share?

---

5. Find and copy one adverb that shows the Titanic sinking was an unhappy event.

---

6. Why do you think the Titanic hit an iceberg and sank? Give a reason for your answer.

---

---

# Answers

1. How many people did the Titanic carry? Tick one.

- over 1,000  
 **over 2,000**  
 over 3,000

2. Number the events from 1-3 to show the order that they happened in.

- 2 The Titanic left Southampton on its first journey.  
 3 The Titanic hit an iceberg.  
 1 The Titanic was built in Belfast.

3. Fill in the missing word.

There were lots of things to do on the Titanic if you were **rich**.

4. How many bathrooms did the third class passengers share?

**two**

5. Find and copy one adverb that shows the Titanic sinking was an unhappy event.

**sadly**

6. Why do you think the Titanic hit an iceberg and sank? Give a reason for your answer.

**Pupils' own responses, such as: I think that the Titanic hit an iceberg and sank because it was too dark for the captain to see the iceberg until it was too late.**